


“About the development of the COM interface” —

SimaPro Connectors

Andreas Ciroth

SimaPro Dealer Meeting, Amersfoort

July 22, 2009

The background of the slide is a reproduction of Michelangelo's famous fresco, 'The Creation of Adam'. It depicts two hands reaching towards each other, with a small gap between the index finger of the hand on the right and the index finger of the hand on the left. The hands are rendered with realistic shading and anatomical detail. The background is a light, textured surface, possibly representing the original stone or plaster.

How to connect to SimaPro,
use its calculation and analysis power,
and data stock,

In a software with own branding, focussing on
specific needs,

On a desktop, and also over the web?

Outline

1. Background. The COM Interface
2. SimaPro Connectors
 - a) The project, quickly
 - b) Desktop connector version
 - c) Web connector version
3. How to use the Connectors?
4. Outlook

1. Background / The COM interface

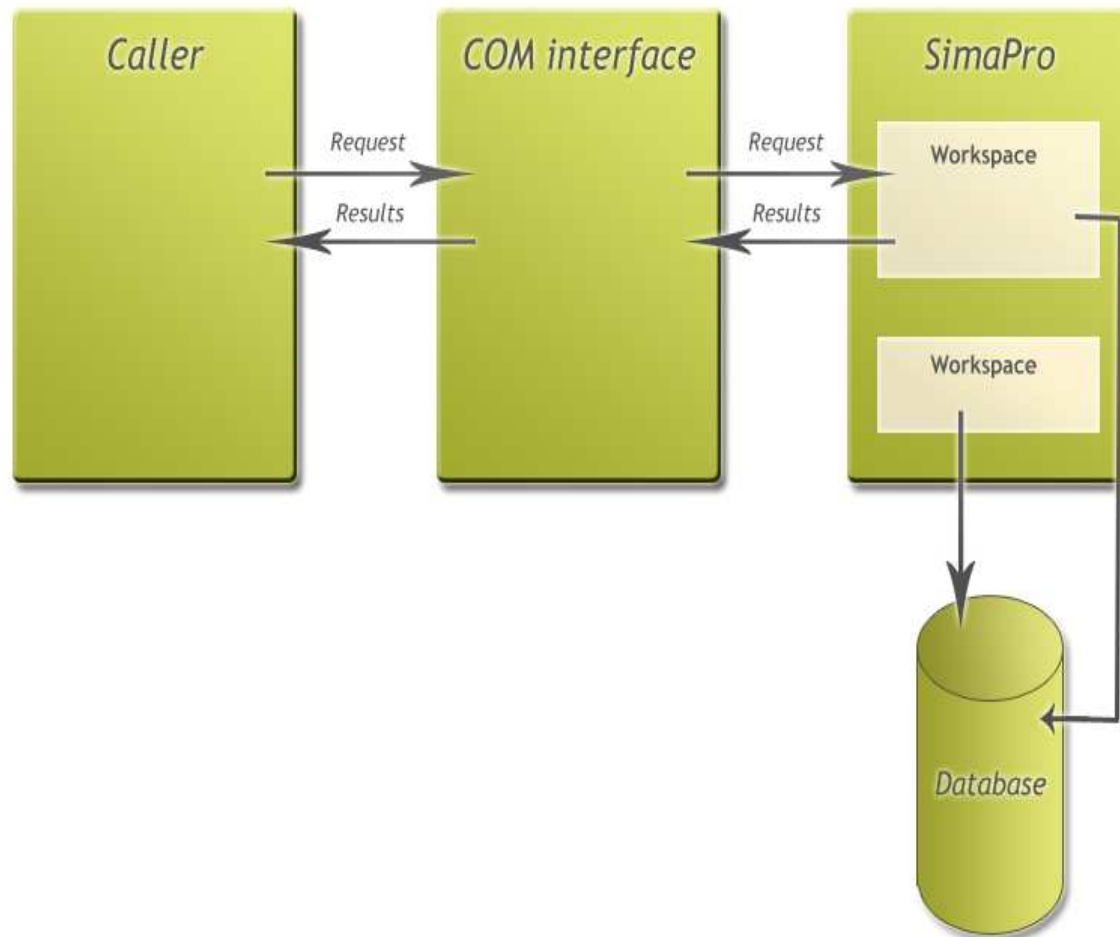
Background

SimaPro is closed source software maintained by PRé, but offers a COM interface that allows access to important objects & methods in SimaPro

The COM interface

- Microsoft standard for external control of a program's functions
- Follows client/server model with SimaPro acting as the server
- Any programming language with a COM interface library may be used such as:
 - Excel/Word/Access (VBA)
 - Visual Basic
 - C++
 - Java

The COM interface



Why is COM useful?

There are many practical applications including:

- Linking with your ERP system
- Analyzing a Bill of Materials from another software tool, such as a CAD/CAM system
- Exporting specific data to Excel
- Creating processes from Excel sheets
- Creating a website with results from SimaPro
- Creating a website where users can enter data into Simapro processes.

2. SimaPro Connectors

The open source connector project

- Commissioned by PRé to GreenDeltaTC, 2008-2009
- Idea: Create an attractive starting package, that may be extended and modified later on, and that shows the potential
- open source connectors with a “lazy” open source licence (Apache 2)
 - programming technique is openly visible
 - no need to re-distribute solutions for one client as open source
- create a web application and a desktop application
- create a Java and a C# application

<http://sourceforge.net/projects/sp-connector/>

The screenshot shows a Mozilla Firefox browser window displaying the SourceForge project page for SimaPro Connector. The browser's address bar shows the URL <http://sourceforge.net/projects/sp-connector/>. The page header includes the SourceForge logo and navigation links for "Find Software", "Develop", "Community", "Site Support", and "About". A search bar is present with the text "enter keyword" and a "Search" button. The main content area features the project title "SimaPro Connector" by acj_m_sr and michaelmoore, with tabs for "Summary", "Files", "Support", and "Develop". A "Download Now!" button is highlighted, showing the file "connector.web_1.0_20090527.zip" (4.8 MiB). Below this, there are links for the project website and tags for "Earth Sciences" and "Ecosystem Sciences". A "Project Feed" section shows two recent releases: "connector.web connector.web_1.0 file released: connector.web_1.0_20090527.zip" and "connector.desktop connector.desktop_1.0 file released: connector.desktop_1.0_20090527.zip". On the right side, there are two advertisements: "Life Cycle Assessment" and "Download POP3 to Exchange". A "Related Projects" section lists several other projects, and a "SimaPro Connector Actions" section includes a "Report inappropriate content" link.

SimaPro Connector | Get SimaPro Connector at SourceForge.net - Mozilla Firefox

File Edit View History Bookmarks Tools Help

http://sourceforge.net/projects/sp-connector/ connector

Most Visited SourceForge.net: Op... The openLCA project LEO Deutsch-Englisch... LOGIN VBBonline.de - Nahver... ScientificJournals.com... SpringerLink - Journal

sourceforge FIND AND DEVELOP OPEN-SOURCE SOFTWARE

Welcome, Guest! [Log In](#) [Create Account](#)

[Find Software](#) [Develop](#) [Community](#) [Site Support](#) [About](#)

enter keyword [Search](#)

SourceForge.net > Find Software > SimaPro Connector

SimaPro Connector by acj_m_sr, michaelmoore [Share](#)

[Summary](#) [Files](#) [Support](#) [Develop](#)

Idea of the project is to create a tool, the Connector, to access the Life Cycle Assessment (LCA) software SimaPro via the COM interface.

Download Now!
connector.web_1.0_20090527... (4.8 MiB) [View all files](#)

<http://sp-connector.sourceforge.net>

Tags: [Earth Sciences](#), [Ecosystem Sciences](#)

Project Feed Show: [Everything](#)

[connector.web](#) connector.web_1.0 file released: connector.web_1.0_20090527.zip

05:19PM on May 27 2009

[connector.desktop](#) connector.desktop_1.0 file released: connector.desktop_1.0_20090527.zip

04:38PM on May 27 2009

Life Cycle Assessment
Die führende Softwarelösung zur Produktnachhaltigkeit. Demo hier!
www.gabi-software.com

Download POP3 to Exchange
POPcon collects your POP3 email and distributes to Exchg. server users
www.christensen-software.com

Ads by Google

Related Projects

- [Social Interaction Framework](#)
- [WMO BUFR Java library and XML translator](#)
- [UIBM](#)
- [OpenAMIS](#)
- [nofdp IDSS](#)

SimaPro Connector Actions

- [Report inappropriate content](#)

Done

http://sourceforge.net/projects/sp-connector/

sourceforge FIND AND DEVELOP OPEN-SOURCE SOFTWARE

Welcome, Guest! [Log In](#) | [Create Account](#)

Find Software | Develop | Community | Site Support | About

SourceForge.net > Find Software > SimaPro Connector > Browse Files

SimaPro Connector

by aci_, m_sr, michaelmoore

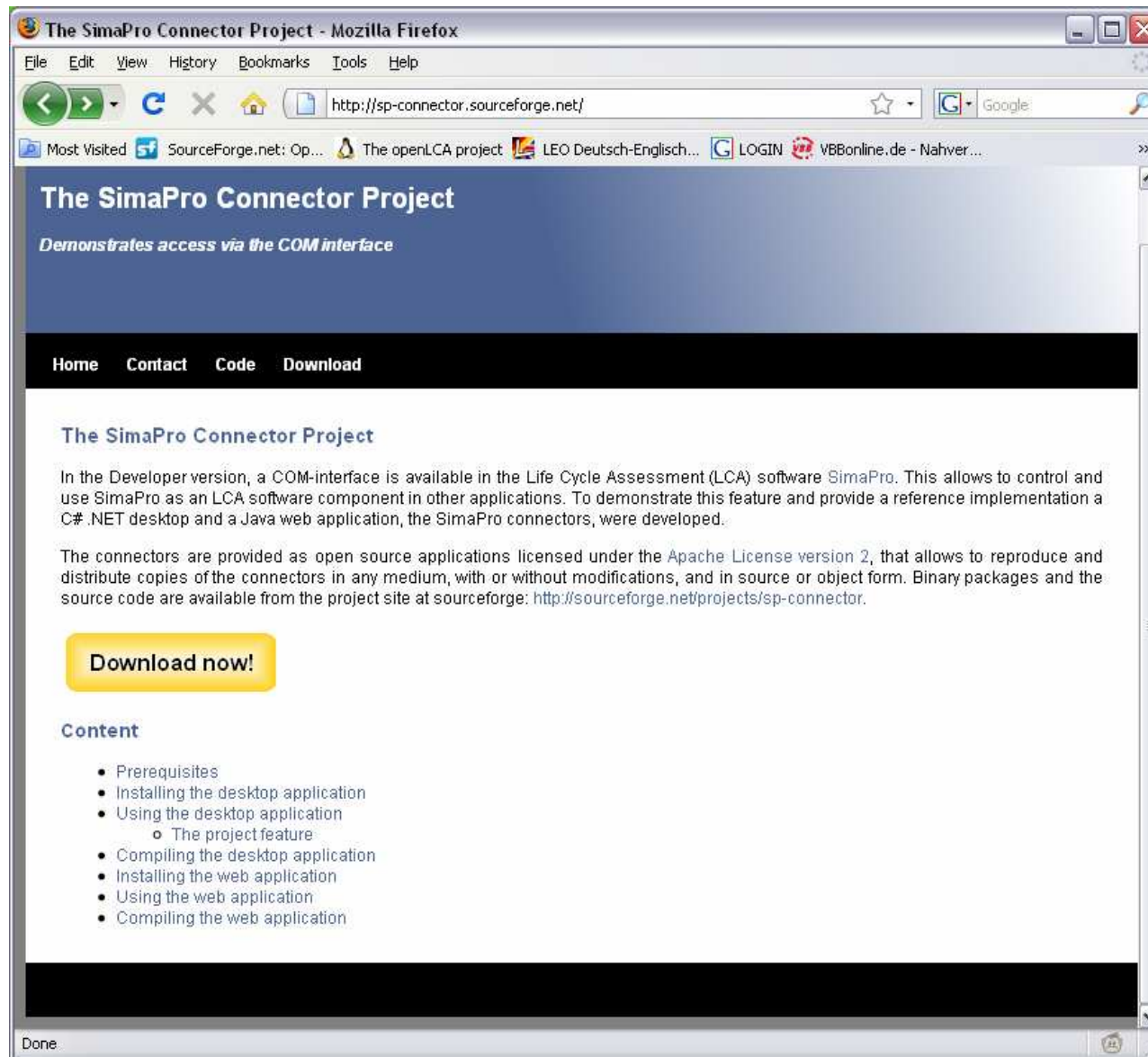
Summary | **Files** | Support | Develop

Idea of the project is to create a tool, the Connector, to access the Life Cycle Assessment (LCA) software SimaPro via the COM interface.

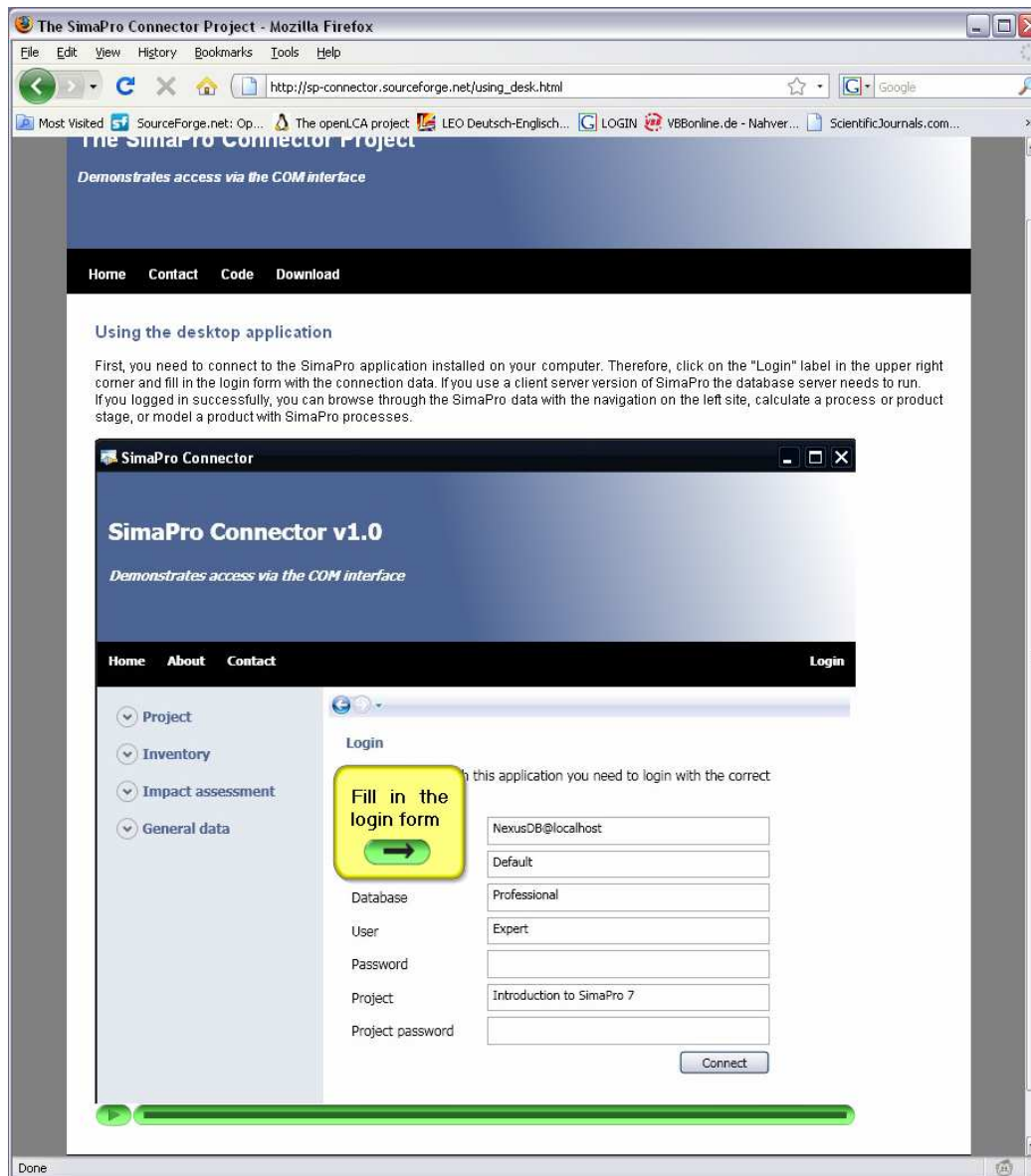
Browse Files for SimaPro Connector

File/Folder Name	Platform	Size	Date	Type	Downloads	Notes/Subscribe
Newest Files						
connector.web_1.0_20090527.zip	None	4.8 MiB	Wed May 27 2009 17:19	None	8	
connector.desktop_1.0_20090527.zip	None	558.2 KiB	Wed May 27 2009 16:38	None	10	
All Files						
connector.desktop						Notes Subscribe
connector.desktop_1.0						Notes
connector.desktop_1.0_20090527.zip	i386	558.2 KiB	Wed May 27 2009 16:38	.zip	10	
connector.web						Notes Subscribe

Project website: <http://sp-connector.sourceforge.net/>

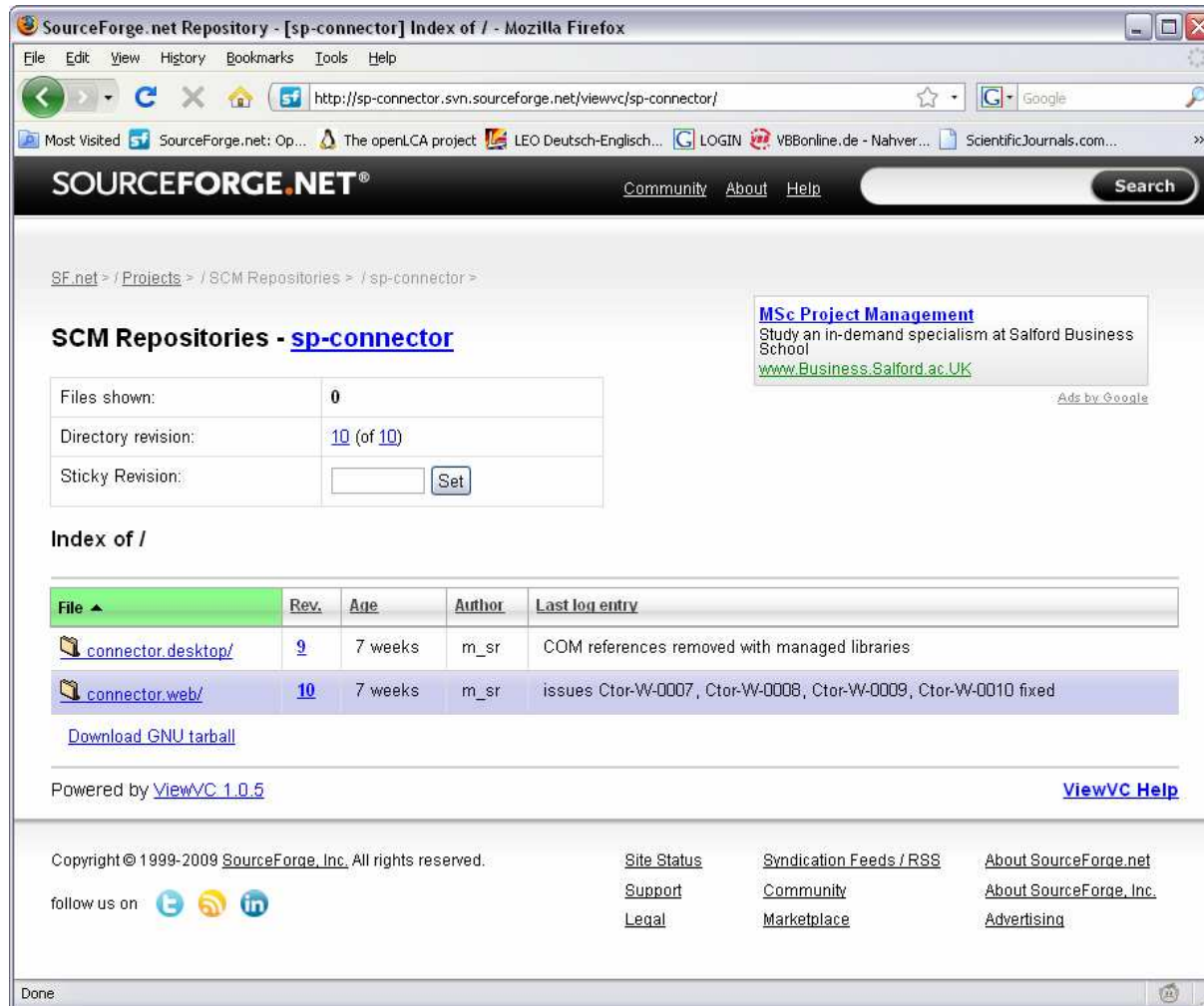


Project website: <http://sp-connector.sourceforge.net/>



video tutorial
available...

Project website: <http://sp-connector.sourceforge.net/>



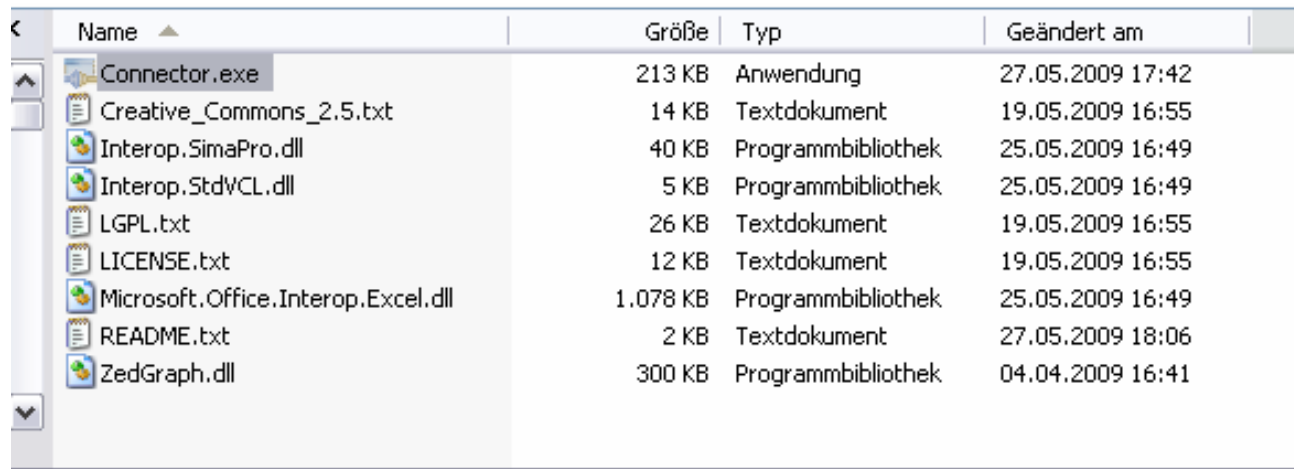
The screenshot shows a Mozilla Firefox browser window displaying the SourceForge.net repository page for the 'sp-connector' project. The page title is 'SourceForge.net Repository - [sp-connector] Index of / - Mozilla Firefox'. The address bar shows the URL 'http://sp-connector.svn.sourceforge.net/viewvc/sp-connector/'. The page content includes the SourceForge.NET logo, navigation links for 'Community', 'About', and 'Help', and a search bar. Below the navigation, there is a breadcrumb trail: 'SF.net > / Projects > / SCM Repositories > / sp-connector >'. The main heading is 'SCM Repositories - [sp-connector](#)'. A table shows repository statistics: 'Files shown: 0', 'Directory revision: 10 (of 10)', and 'Sticky Revision: [input] [Set]'. An advertisement for 'MSc Project Management' is visible. Below the statistics, there is an 'Index of /' section with a table listing files and their details. The table has columns for 'File', 'Rev.', 'Age', 'Author', and 'Last log entry'. Two files are listed: 'connector.desktop/' (revision 9, 7 weeks old, author m_sr, last log entry: 'COM references removed with managed libraries') and 'connector.web/' (revision 10, 7 weeks old, author m_sr, last log entry: 'issues Ctor-W-0007, Ctor-W-0008, Ctor-W-0009, Ctor-W-0010 fixed'). Below the table, there is a link to 'Download GNU tarball'. At the bottom of the page, it says 'Powered by ViewVC 1.0.5' and 'ViewVC Help'. The footer contains copyright information: 'Copyright © 1999-2009 SourceForge, Inc. All rights reserved.' and links for 'Site Status', 'Support', 'Legal', 'Syndication Feeds / RSS', 'Community', 'Marketplace', 'About SourceForge.net', 'About SourceForge, Inc.', and 'Advertising'. There are also social media icons for Twitter, RSS, and LinkedIn.

File	Rev.	Age	Author	Last log entry
connector.desktop/	9	7 weeks	m_sr	COM references removed with managed libraries
connector.web/	10	7 weeks	m_sr	issues Ctor-W-0007, Ctor-W-0008, Ctor-W-0009, Ctor-W-0010 fixed

Source code
also available...

Desktop application

- Start SimaPro
(Developer version, COM server registered)
- Start connector.exe



Name	Größe	Typ	Geändert am
Connector.exe	213 KB	Anwendung	27.05.2009 17:42
Creative_Commons_2.5.txt	14 KB	Textdokument	19.05.2009 16:55
Interop.SimaPro.dll	40 KB	Programmbibliothek	25.05.2009 16:49
Interop.StdVCL.dll	5 KB	Programmbibliothek	25.05.2009 16:49
LGPL.txt	26 KB	Textdokument	19.05.2009 16:55
LICENSE.txt	12 KB	Textdokument	19.05.2009 16:55
Microsoft.Office.Interop.Excel.dll	1.078 KB	Programmbibliothek	25.05.2009 16:49
README.txt	2 KB	Textdokument	27.05.2009 18:06
ZedGraph.dll	300 KB	Programmbibliothek	04.04.2009 16:41

Web application

- Install Java JDK (on the server)
- Install Apache Tomcat (on the server), version 6.x
See also tutorial on project website
- Copy files into Tomcat directory (see explanation)
- Restart Tomcat
- Start browser with <http://localhost:8080/connector/>

3. How to use the Connectors?

Using the connectors, options

- Just use them as they are (plus report back any suggestions to us & PRé)
- Modify the design (CSS design, adaptable to specific CI / branding, ...)
- Extend the functionality (COM limitations but there are workarounds)
- All this in a careful analysis of user needs, and of IT environment requirements
- For each user that is logged in (at one moment) one multi-user licence is required

4. Outlook



Outlook, addition

PRé has committed to continue the support of the COM interface in future versions of SimaPro.

Thank you!

Dr. Andreas Ciroth

GreenDeltaTC GmbH, Berlin, Germany

ciroth@greendeltatc.com